

SHOWN FOR L.H. MACHINE

BELT SIZE: 3/4" X 43"

BLT-W740-3/4X43

UNITED BAKERY EQUIPMENT CO.

92BS BAGEL SLICER SPINDLE

BELT DIAGRAM

NO SCALE

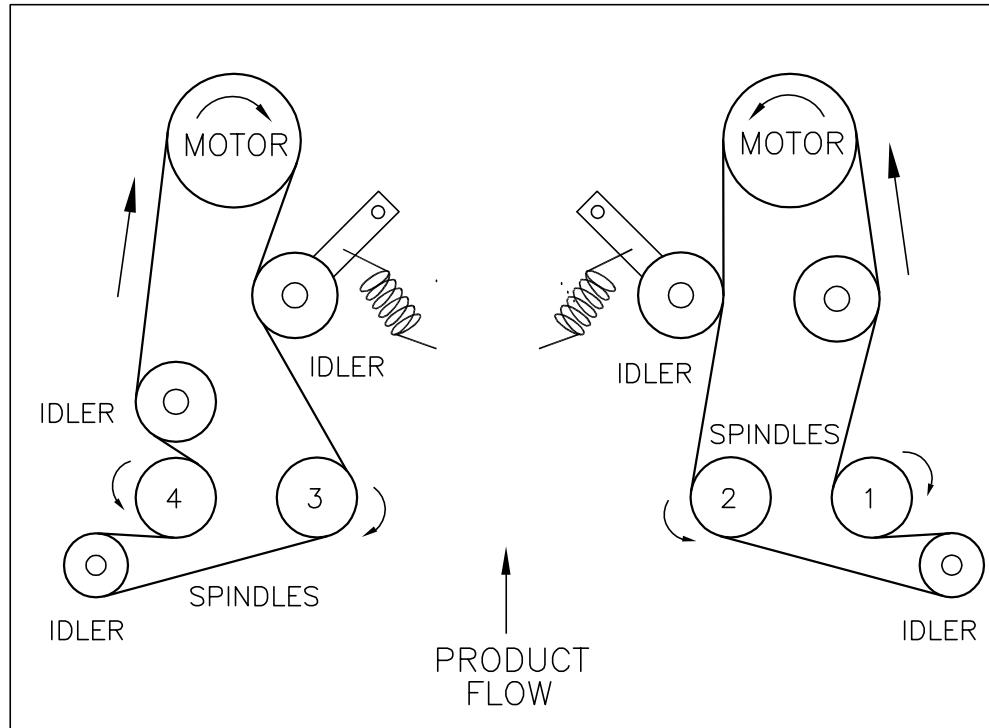
10-9-92

SERIES NO.

92BS

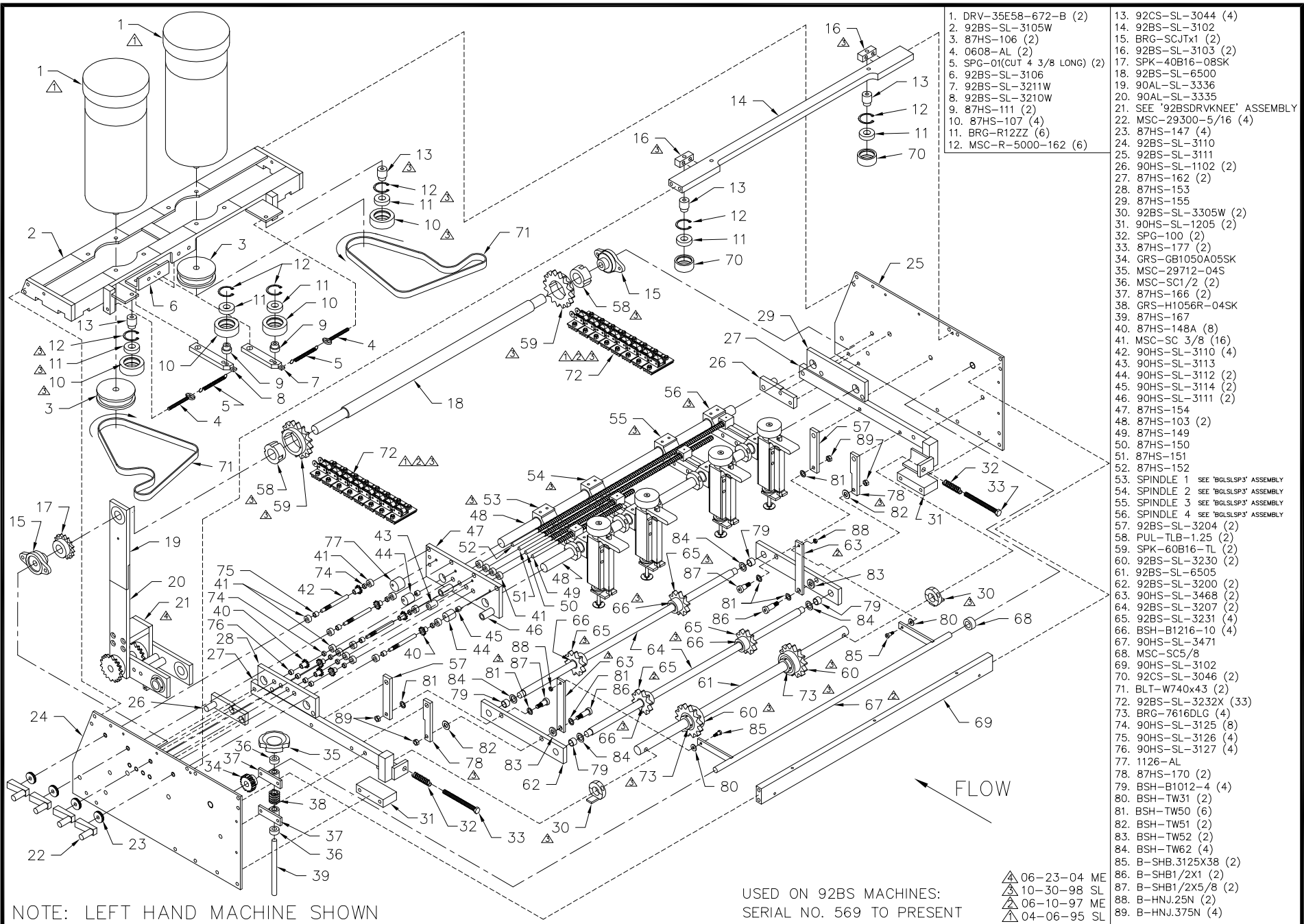
PART NO.

92BSBLTL1



SHOWN FOR R.H. MACHINE
 BELT SIZE: 3/4" X 43"
 BLT-W740-3/4X43

UNITED BAKERY EQUIPMENT CO.	92BS BAGEL SLICER SPINDLE	NO SCALE	SERIES NO. 92BS	PART NO. 92BSBLTR1
	BELT DIAGRAM	10-9-92		



- 1. DRV-35E58-672-B (2)
- 2. 92BS-SL-3105W
- 3. 87HS-106 (2)
- 4. 0608-AL (2)
- 5. SPG-01(CUT 4 3/8 LONG) (2)
- 6. 92BS-SL-3106
- 7. 92BS-SL-3211W
- 8. 92BS-SL-3210W
- 9. 87HS-111 (2)
- 10. 87HS-107 (4)
- 11. BRG-R12ZZ (6)
- 12. MSC-R-5000-162 (6)
- 13. 92CS-SL-3044 (4)
- 14. 92BS-SL-3102
- 15. BRG-SCJTx1 (2)
- 16. 92BS-SL-3103 (2)
- 17. SPK-40B16-0BSK
- 18. 92BS-SL-6500
- 19. 90AL-SL-3336
- 20. 90AL-SL-3335
- 21. SEE '92BSDRVKNEE' ASSEMBLY
- 22. MSC-29300-5/16 (4)
- 23. 87HS-147 (4)
- 24. 92BS-SL-3110
- 25. 92BS-SL-3111
- 26. 90HS-SL-1102 (2)
- 27. 87HS-162 (2)
- 28. 87HS-153
- 29. 87HS-155
- 30. 92BS-SL-3305W (2)
- 31. 90HS-SL-1205 (2)
- 32. SPG-100 (2)
- 33. 87HS-177 (2)
- 34. GRS-GB1050A05SK
- 35. MSC-29712-04S
- 36. MSC-SC1/2 (2)
- 37. 87HS-166 (2)
- 38. GRS-H1056R-04SK
- 39. 87HS-167
- 40. 87HS-148A (8)
- 41. MSC-SC 3/8 (16)
- 42. 90HS-SL-3110 (4)
- 43. 90HS-SL-3113
- 44. 90HS-SL-3112 (2)
- 45. 90HS-SL-3114 (2)
- 46. 90HS-SL-3111 (2)
- 47. 87HS-154
- 48. 87HS-103 (2)
- 49. 87HS-149
- 50. 87HS-150
- 51. 87HS-151
- 52. 87HS-152
- 53. SPINDLE 1 SEE 'BGLSLSPY' ASSEMBLY
- 54. SPINDLE 2 SEE 'BGLSLSPY' ASSEMBLY
- 55. SPINDLE 3 SEE 'BGLSLSPY' ASSEMBLY
- 56. SPINDLE 4 SEE 'BGLSLSPY' ASSEMBLY
- 57. 92BS-SL-3204 (2)
- 58. PUL-TLB-1.25 (2)
- 59. SPK-60B16-TL (2)
- 60. 92BS-SL-3230 (2)
- 61. 92BS-SL-6505
- 62. 92BS-SL-3200 (2)
- 63. 90HS-SL-3468 (2)
- 64. 92BS-SL-3207 (2)
- 65. 92BS-SL-3231 (4)
- 66. BSH-B1216-10 (4)
- 67. 90HS-SL-3471
- 68. MSC-SC5/8
- 69. 90HS-SL-3102
- 70. 92CS-SL-3046 (2)
- 71. BLT-W740x43 (2)
- 72. 92BS-SL-3232X (33)
- 73. BRG-7616DLG (4)
- 74. 90HS-SL-3125 (8)
- 75. 90HS-SL-3126 (4)
- 76. 90HS-SL-3127 (4)
- 77. 1126-AL
- 78. 87HS-170 (2)
- 79. BSH-B1012-4 (4)
- 80. BSH-TW31 (2)
- 81. BSH-TW50 (6)
- 82. BSH-TW51 (2)
- 83. BSH-TW52 (2)
- 84. BSH-TW62 (4)
- 85. B-SHB.3125X38 (2)
- 86. B-SHB1/2X1 (2)
- 87. B-SHB1/2X5/8 (2)
- 88. B-HNJ.25N (2)
- 89. B-HNJ.375N (4)

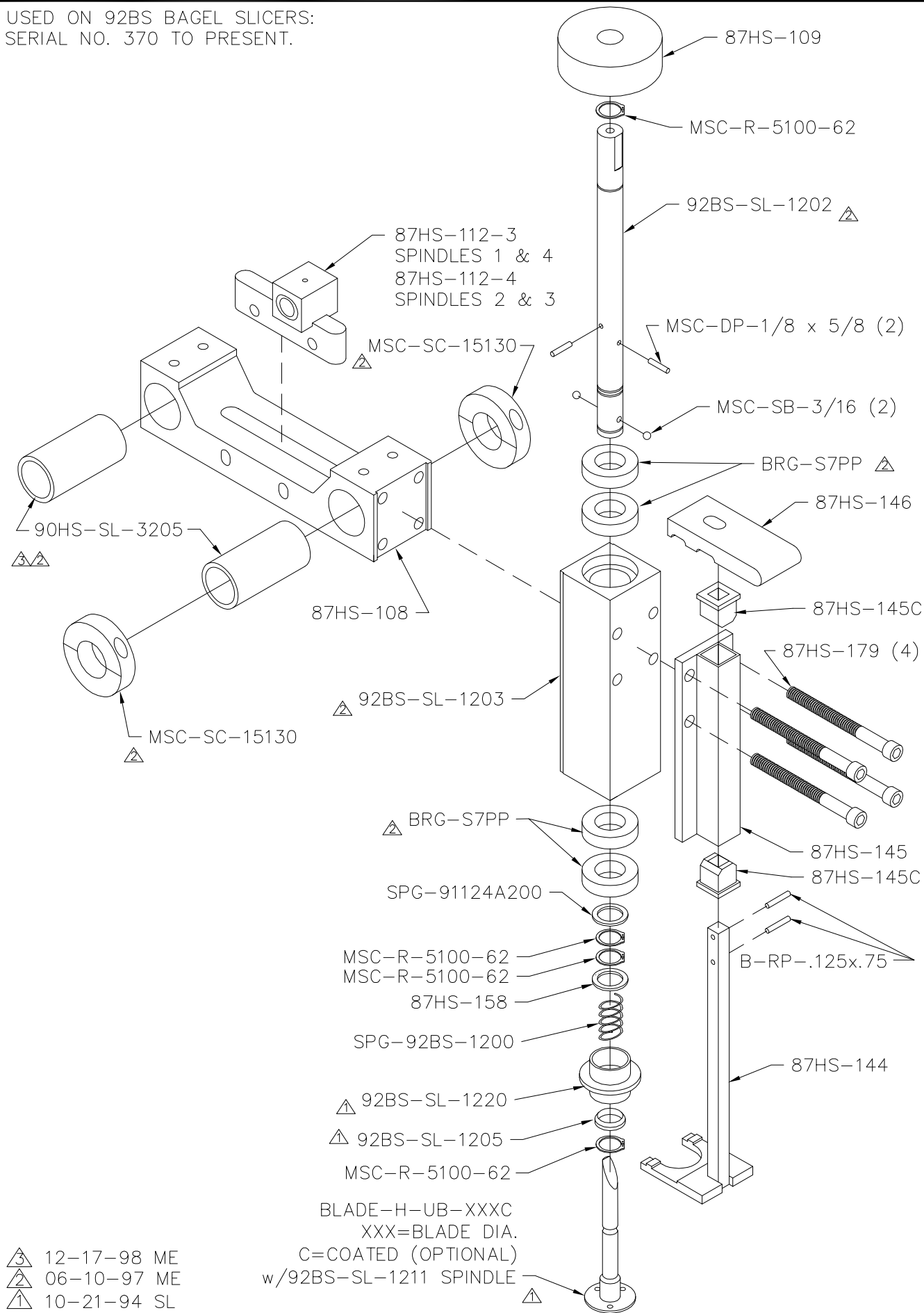
NOTE: LEFT HAND MACHINE SHOWN

USED ON 92BS MACHINES:
SERIAL NO. 569 TO PRESENT

- △ 06-23-04 ME
- ◻△ 10-30-98 SL
- △ 06-10-97 ME
- ◻△ 04-06-95 SL

UNITED BAKERY EQUIPMENT CO.	92 BAGEL SLICER	NO SCALE	SERIES NO. 92BS	PART NO. 'BAGELSL4'
		10-30-98		

USED ON 92BS BAGEL SLICERS:
SERIAL NO. 370 TO PRESENT.



- △ 12-17-98 ME
- △ 06-10-97 ME
- △ 10-21-94 SL

BLADE-H-UB-XXXC
XXX=BLADE DIA.
C=COATED (OPTIONAL)
w/92BS-SL-1211 SPINDLE

PART NO. 'BGLSLSP3'	SERIES NO. 92BS	NO SCALE	10-21-94
		92 BAGEL SLICER SPINDLE ASSEMBLY	4 SPINDLES
UNITED BAKERY EQUIPMENT CO.			

B-HNL.250N
 USE LOCKTITE ON BOLT
 BEFORE ADDING NUT

92BS-SL-3232B

92BS-SL-3232A

B-SF.25Nx34

PROCESS

- A. BOLT TOGETHER
- B. USE LOCKTITE
- C. BOLT NYLOK NUT

MAKE: (66) SIXTY-SIX

UNITED BAKERY EQUIPMENT CO.

BAGEL SLICER PRESSURE TABLE
 CHAIN MOUNT PLATE - ASSEMBLY

FULL
 10-30-98

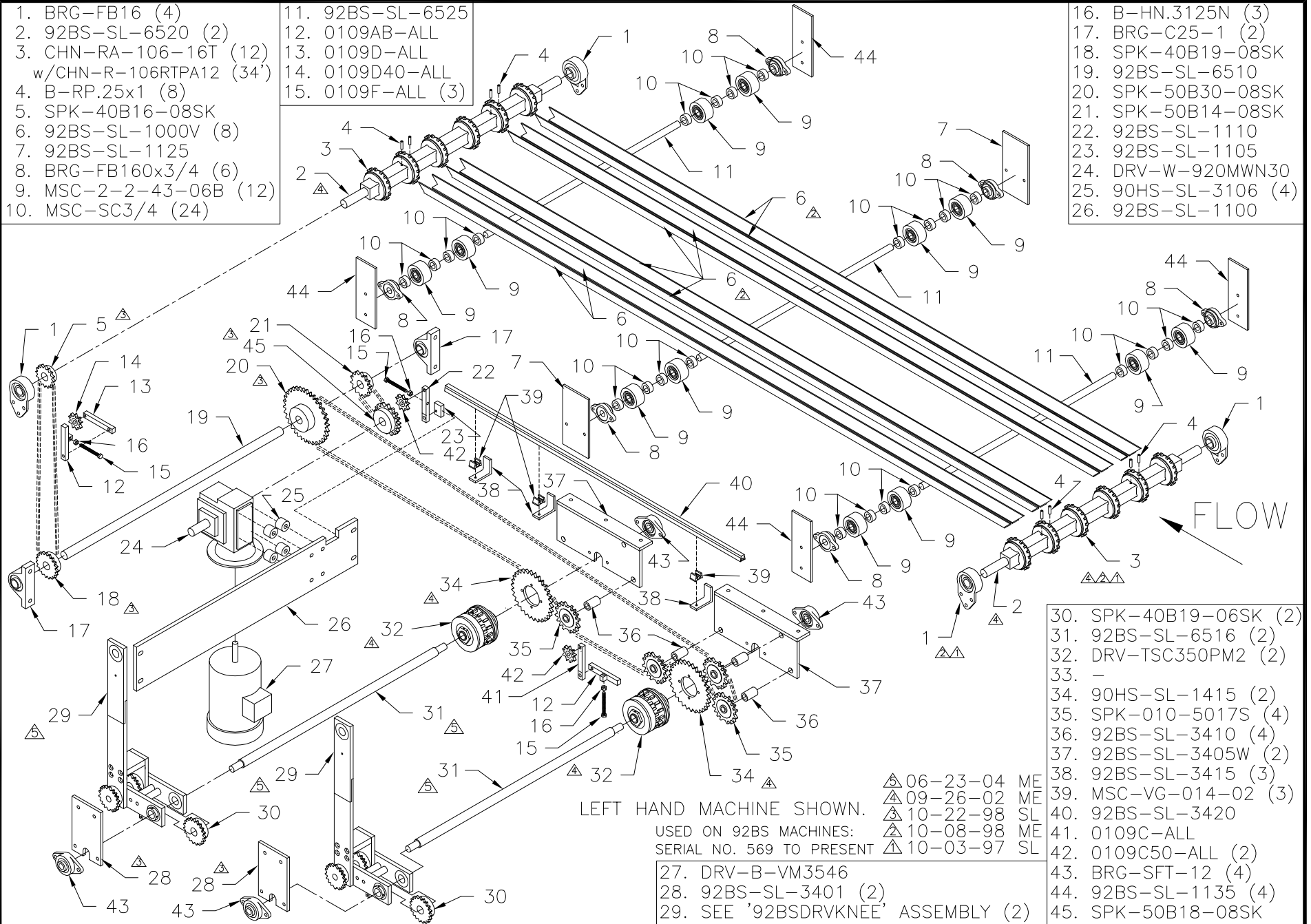
SERIES NO.
 92BS

PART NO.
 92BS-SL-3232X

1. BRG-FB16 (4)
2. 92BS-SL-6520 (2)
3. CHN-RA-106-16T (12)
w/CHN-R-106RTPA12 (34')
4. B-RP.25x1 (8)
5. SPK-40B16-08SK
6. 92BS-SL-1000V (8)
7. 92BS-SL-1125
8. BRG-FB160x3/4 (6)
9. MSC-2-2-43-06B (12)
10. MSC-SC3/4 (24)

11. 92BS-SL-6525
12. 0109AB-ALL
13. 0109D-ALL
14. 0109D40-ALL
15. 0109F-ALL (3)

16. B-HN.3125N (3)
17. BRG-C25-1 (2)
18. SPK-40B19-08SK
19. 92BS-SL-6510
20. SPK-50B30-08SK
21. SPK-50B14-08SK
22. 92BS-SL-1110
23. 92BS-SL-1105
24. DRV-W-920MWN30
25. 90HS-SL-3106 (4)
26. 92BS-SL-1100



LEFT HAND MACHINE SHOWN.

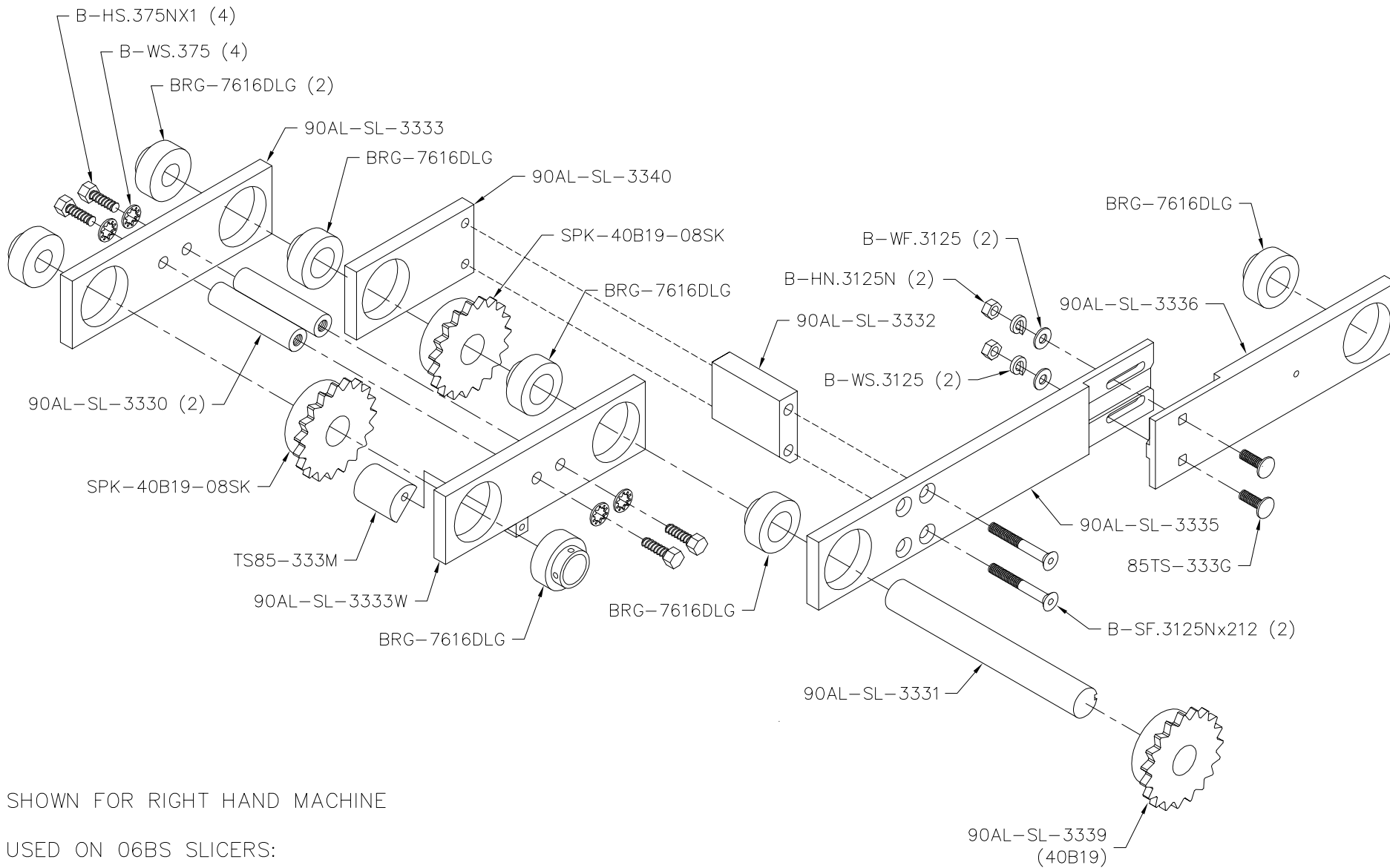
USED ON 92BS MACHINES:
SERIAL NO. 569 TO PRESENT

- △ 06-23-04 ME
- △ 09-26-02 ME
- △ 10-22-98 SL
- △ 10-08-98 ME
- △ 10-03-97 SL

27. DRV-B-VM3546
28. 92BS-SL-3401 (2)
29. SEE '92BSDRVKNEE' ASSEMBLY (2)

30. SPK-40B19-06SK (2)
31. 92BS-SL-6516 (2)
32. DRV-TSC350PM2 (2)
33. -
34. 90HS-SL-1415 (2)
35. SPK-010-5017S (4)
36. 92BS-SL-3410 (4)
37. 92BS-SL-3405W (2)
38. 92BS-SL-3415 (3)
39. MSC-VG-014-02 (3)
40. 92BS-SL-3420
41. 0109C-ALL
42. 0109C50-ALL (2)
43. BRG-SFT-12 (4)
44. 92BS-SL-1135 (4)
45. SPK-50B18-08SK

UNITED BAKERY EQUIPMENT CO.	92BS BAGEL SLICER SELF DRIVEN	NO SCALE	SERIES NO. 92BS	PART NO. '92BSCON5'
	CONVEYOR ASSEMBLY	09-26-02		



SHOWN FOR RIGHT HAND MACHINE

USED ON 06BS SLICERS:
SERIAL NO. 100 TO PRESENT

USED ON 92BS SLICERS:
SN 569 TO PRESENT

UNITED BAKERY EQUIPMENT CO.	DRIVE KNEE ASSEMBLY FOR 92BS	NO SCALE	SERIES NO. 92BS	PART NO. '92BSDRVKNEE'
	BAGEL SLICER 92BS-SL-3340XAY	6-10-04		