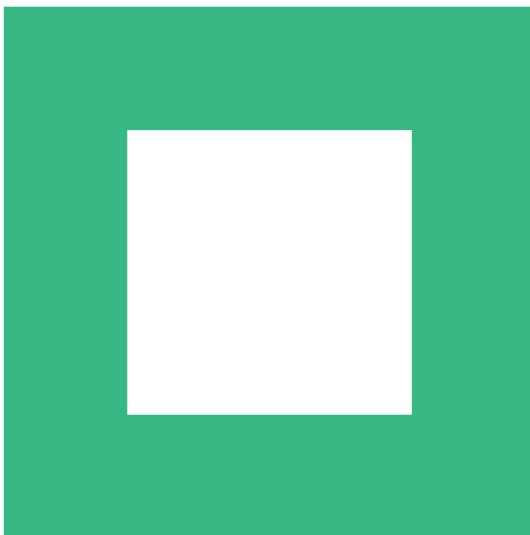


**SYNTEGON**

PROCESSING & PACKAGING

# Kliklok Topload Carton Formers.

Trusted lock and glue formers for 75+ years.



ACE

ECT-625

Genesis

JR

KFW

SR4W

Transformer

# Kliklok ACE Topload Carton Former.

THE WORLD'S MOST ADVANCED CARTON ERECTOR.

The Kliklok ACE topload carton former is our most advanced carton forming system. Based on input from our customers around the world, the ACE was designed and built for flexibility, ergonomics, access, reduced maintenance, and future-proof speed.

## **ERGONOMIC LOW-LEVEL CARTON HOPPER**

The carton hopper on the ACE is the lowest we've ever placed on a former. Loading is easy and at a comfortable height for cart-to-hopper carton transfer, whether it's with one, two, or three heads.

## **NEW PATENTED FLEX FEEDER**

The new feeder on the ACE provides guaranteed positive carton control through a two-stage process. Cartons are picked from the hopper and placed in a holding area. Carton pushers positively move the cartons to the forming cavity, where they are formed and released onto a conveyor.

## **LOCK AND/OR GLUE FORMING**

The ACE offers the greatest production line flexibility by being able to run lock-formed and/or glue-formed carton on one machine, and the glue system does not need to be removed to run lock-formed cartons.

## **SCALABLE, FLEXIBLE, AND ACCESSIBLE**

The ACE has a small footprint – just 8.6 m<sup>2</sup> (92 ft<sup>2</sup>) – but can accommodate a wide size range, with one, two, or three heads, for top speeds of 180 cpm. The incredible flexibility of the ACE allows you to actually add and remove heads whenever you want. Wardrobe-style doors allow easy access for size changes.

## **SIMPLIFIED ELECTRICAL AND MAINTENANCE**

An integrated servo drive system offers plug-and-play maintenance, and a simplified electrical cabinet means air conditioning is not needed.

### **Your benefits**

- ❑ Speeds up to 180 cpm (triple heads)
- ❑ Ergonomic low-level carton hopper
- ❑ Patented Flex Feeder for positive carton control
- ❑ Lock or glue forming
- ❑ Industry 4.0 HMI with visual operator instructions



# Packaging Line Structure.

## Primary Packaging

Vertical Bagmaker

Horizontal Wrapper

Cup Filler

## Product Handling

Pick and Place Robotics

Product Timing / Loading

## Secondary Packaging

Topload

Endload

Wraparound

Case Packers

Kliklok ACE Carton Former

## Standard Features

- ❑ Speeds up to 180 cpm (triple head)
- ❑ One (1) set of forming parts
- ❑ Capable of running glue-style and/or stripper lock-style cartons
- ❑ Stainless steel open frame sanitary construction
- ❑ Low-level hopper
- ❑ 580 mm (22.83") hopper capacity
- ❑ Servo patent-pending Flex-feeder
- ❑ Controlled carton supply with photoeye
- ❑ Vacuum generator for carton feeder
- ❑ Servo profiled plunger
- ❑ Tool-less quick release plunger mounting
- ❑ IP54 dust and water splash protection
- ❑ Low carton inventory sensing with alarm
- ❑ Industry 4.0 HMI with 3D models with operator instructions, mounted on swivel mount
- ❑ Integrated servo drive system
- ❑ Wardrobe guarding with interlocking doors
- ❑ Carton air eject
- ❑ IP65 stainless steel rotary main disconnect box
- ❑ Carton exit left or right
- ❑ Delayed start alarm
- ❑ Multi-color light stack
- ❑ External ethernet convenience port

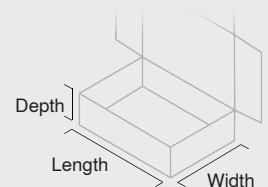
## Optional Features

- ❑ Pressurized hot-melt glue system, Robatech standard
- ❑ Servo-driven outfeed belt conveyor
- ❑ Servo-driven flighted outfeed conveyor
- ❑ IP65
- ❑ Dust extraction
- ❑ Vacuum pump for carton feeder, with overload protection
- ❑ Network connectivity via VPN
- ❑ Casters for portability

## Technical Specifications

Performance	min.	max.
Speed (strokes per minute)	20	60 (60/120/180 cpm)
<small>Actual speed depends upon machine configuration and carton size and style.</small>		
Carton Size Range	min.	max.
Length	86 mm (3.39")	440 mm (17.32")
Width	68 mm (2.68")	300 mm (11.81")
Depth	18 mm (0.71")	170 mm (6.69")

An individual carton combining multiple minimum or maximum dimensions may not be compatible with the standard system.



### Carton Materials

Solid board (SBS, SUS, Recycled) from 0.014"–0.028", fluted corrugated B, Micro-flute E and F.

### Operating Requirements

Power Supply	400 VAC / 480 VAC, 50/60 Hz
Air (minimum)	20 L/min (0.7 cfm / 3.74 scfm) 5.5 bar (80 psi)

### Construction

Stainless steel open-channel frame. Stainless steel shafts. Nickel-plated pulleys and sprockets. Clear polycarbonate guards. Engineering plastics.

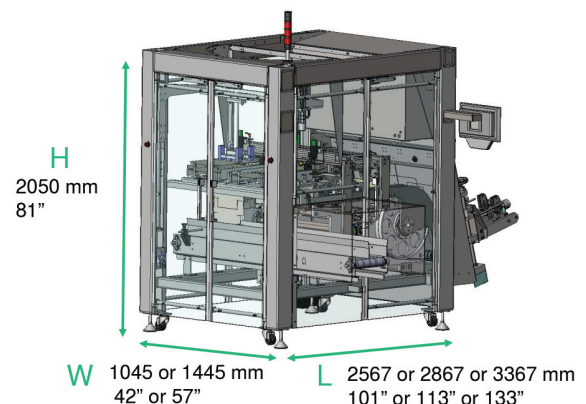
Shipping Weight, Estimated	1650 kg (3638 lb)
----------------------------	-------------------

Kliklok Corporation, A Syntegon Technology Company  
5224 Snapfinger Woods Drive  
Decatur, GA 30035 USA

Phone +1 770 981-5200  
Fax +1 770 987-7160  
Mail 2p.3p@syntegon.com  
Web www.syntegon.com

Document PAUS-MKT-00125 rev 4  
Date Dec 21, 2023

© Syntegon Group | PAUS | 12.2023 | Subject to change without notice.



# Kliklok ECT-625 Topload Carton Former.

## MAXIMUM STRENGTH GLUE FORMING.

The Kliklok ECT-625 is a hot-melt adhesive-style topload carton and tray forming machine. The innovative indexing turret provides remarkable carton control and is capable of handling an impressive array of carton and tray designs, from typical four-corner styles to complex hexagonal, octagonal, and other unusual multi-sided packages.

### EASY OPERATION WITH TOUCHSCREEN HMI

The color graphic touchscreen HMI is intuitive and features recipe-based programming that reduces operator error and ensures consistent performance regardless of shift or operator skill.

### RECIPROCATING FORMING CAVITY FOR SUPERIOR SEALING

The reciprocating forming and compression motion on the ECT provides exceptional carton sealing. The double compression results in flawless, square cartons.

### FOUR-STATION TURRET FOR SUPERIOR CARTON CONTROL

The ECT's innovative technology provides discrete carton feeding, glue application, forming, and finished carton strip-off at progressive turret positions with short, controlled movements and smooth mechanical action.

### INTEGRATED OUTFEED CONVEYOR

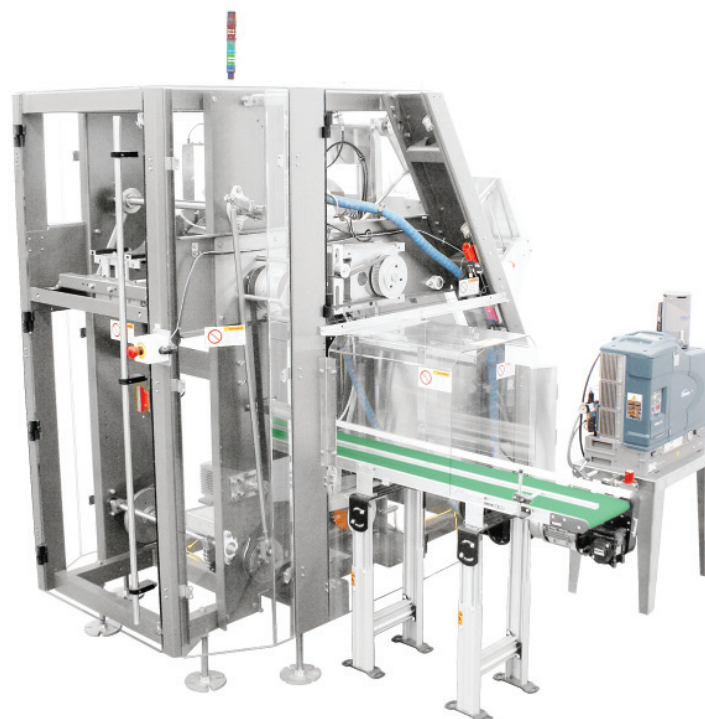
Standard equipment on the ECT and oriented to exit either left or right, the high-grip belt conveyor provides superior carton positioning.

### POSITIVE CARTON STRIP-OFF

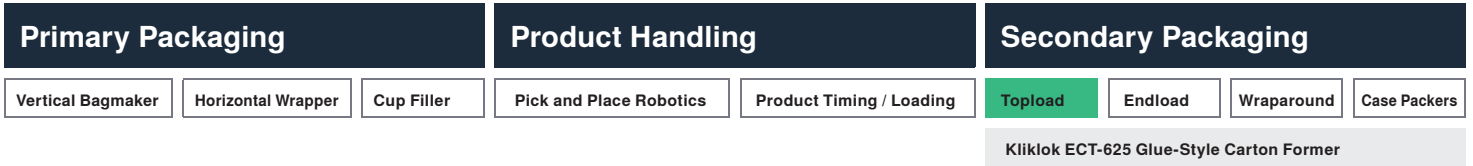
Mechanical strip-off fingers ensure that each carton is removed from the forming anvil so that it is reliably dropped onto the running conveyor. This allows for greater carton control and higher machine efficiency without a traditional air eject system.

## Your benefits

- ▣ Speeds up to 75 cpm
- ▣ Indexing turret provides full carton control
- ▣ Fixed mandrels for standard and special shapes
- ▣ Easy-to-use touchscreen HMI
- ▣ Integrated outfeed conveyor



# Packaging Line Structure.



## Standard Features

- ❑ High-speed four-station rotary forming turret
- ❑ Allen-Bradley color touchscreen HMI, rear-mounted
- ❑ Allen-Bradley PLC controls
- ❑ Fully automatic operation
- ❑ Compact construction
- ❑ Integrated belt-style outfeed conveyor
- ❑ Static hopper
- ❑ Controlled carton supply system
- ❑ Vacuum pump (with overload protection) for forming anvils
- ❑ Vacuum generator pump for carton feed
- ❑ Fully enclosed barrier guarding with interlocked doors
- ❑ Nema 4X stainless steel electrical enclosure with flange-mounted main disconnect
- ❑ Overload detent clutch for machine protection
- ❑ Multi-color light stack
- ❑ Delay start horn
- ❑ Hot-melt glue system
- ❑ Low carton inventory sensing with alert

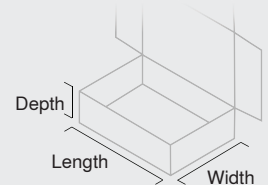
## Optional Features

- ❑ Machine-driven flighted outfeed conveyor, configurable discharge direction
- ❑ Controlled vacuum control via foot switch
- ❑ Alternative electrical controls
- ❑ Servo drive motor

## Technical Specifications

Performance	min.	max.
Speed (cartons per minute) <small>Actual speed depends upon machine configuration and carton size and style.</small>	35	75
Carton Size Range	min.	max.
Length	100 mm (3.94")	450 mm (17.75")
Width	70 mm (2.75")	305 mm (12.00")
Depth	38 mm (1.50")	127 mm ( 5.00")

An individual carton combining multiple minimum or maximum dimensions may not be compatible with the standard system.



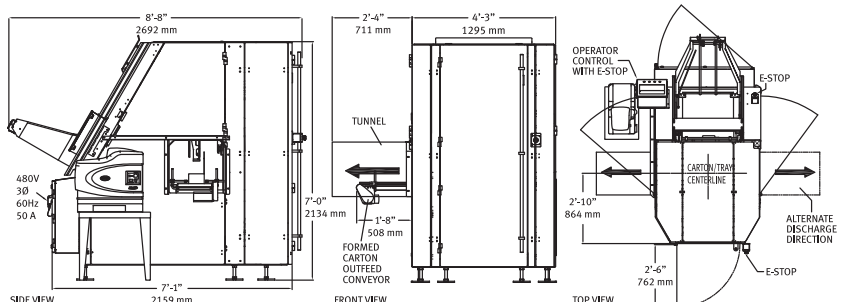
## Operating Requirements

Power Supply	400 VAC / 480 VAC, 50/60 Hz
Air (minimum)	85 L/min (3 cfm / 16.03 scfm) 5.5 bar (80 psi)

## Construction

Fully-welded IP54 powder-coated carbon steel frame. Stainless steel shafts. Nickel-plated chains, pulleys and sprockets. Clear polycarbonate guards. Engineering plastics.

Shipping Weight, Skidded	1000 kg (2200 lb)
--------------------------	-------------------



Kliklok LLC, A Syntegon Technology Company  
5224 Snapfinger Woods Drive  
Decatur, GA 30035 USA

Phone +1 770 981-5200  
Fax +1 770 987-7160  
Mail 2p.3p@syntegon.com  
Web www.syntegon.com/2p

Document PAUS-MKT-00019 Rev 7  
Date Aug 30, 2023

# Kliklok Genesis Topload Carton Former.

VERSATILE AND DEPENDABLE LOCK-STYLE FORMER.

The Kliklok Genesis lock-style carton former combines high-speed forming capabilities with a remarkably generous carton size range. Equipped with many options as standard equipment, the Genesis offers the ultimate in operational flexibility, versatility, and reliability. Carton size changeover can be accomplished in just ten to fifteen minutes.

## **EASY OPERATION WITH TOUCHSCREEN HMI**

The color graphic touchscreen HMI is intuitive and features recipe-based programming that reduces operator error and ensures consistent performance, regardless of shift or operator skill.

## **MULTIPLE HEAD CONFIGURATIONS**

The Kliklok Genesis is a versatile machine. It is available with stripper lock forming heads in single-, double-, and triple-head configurations.

## **QUICK-CHANGE FORMING HEADS**

Kliklok's composite forming heads are lightweight, long-lasting, and provide unusually quiet operation. Size changes can be made in as little as ten to fifteen minutes.

## **VACUUM STRIP-OFF**

The Genesis features a unique vacuum strip-off arm that provides positive carton placement on the outfeed conveyor.

## **INTEGRATED OUTFEED CONVEYOR**

The flighted outfeed conveyor is standard equipment on the Genesis. It provides investment savings and layout flexibility.

### Your benefits

- ❑ Speeds up to 180 cpm (triple heads)
- ❑ Easy-to-use touchscreen HMI
- ❑ Optional triple-head configuration
- ❑ Integrated outfeed conveyor
- ❑ Vacuum carton strip-off
- ❑ Fast changeovers



# Packaging Line Structure.

Primary Packaging			Product Handling			Secondary Packaging		
Vertical Bagmaker	Horizontal Wrapper	Cup Filler	Pick and Place Robotics	Product Timing / Loading	<b>Topload</b>	Endload	Wraparound	Case Packers
Kliklok Genesis Lock-Style Carton Former								

## Standard Features

- ❑ Multiple-head configuration
- ❑ Allen-Bradley color touchscreen HMI, front-mounted
- ❑ Allen-Bradley PLC controls and electricals
- ❑ Fully automatic operation plus two-button jog control
- ❑ Servo drive motor
- ❑ Lightweight feed bar assembly
- ❑ Integrated vacuum strip-off for positive carton delivery to integrated flighted outfeed conveyor
- ❑ Vacuum generator for carton feeder and carton strip-off
- ❑ 558 mm ( 22") hopper capacity
- ❑ Inclined carton magazine agitators for positive stack advancement and weighted, locking stack pushers
- ❑ Controlled carton supply system with photoeye
- ❑ Fully-enclosed barrier guarding with interlocked doors
- ❑ Startup delay with horn
- ❑ Nema 4X stainless steel slope top electrical enclosure with flange-mounted main disconnect
- ❑ IP54 dust and water splash protection
- ❑ Casters for portability and leveling screws
- ❑ Multi-color light stack
- ❑ External ethernet convenience port
- ❑ Low carton inventory sensing with alert

## Optional Features

- ❑ Controlled vacuum system with remote foot switch
- ❑ 1/4 HP rotary vane vacuum pumps
- ❑ Alternative electrical controls
- ❑ Detent plunger

Kliklok LLC, A Syntegon Technology Company  
 5224 Snapfinger Woods Drive  
 Decatur, GA 30035 USA

Phone +1 770 981-5200  
 Fax +1 770 987-7160  
 Mail 2p.3p@syntegon.com  
 Web www.syntegon.com/2p

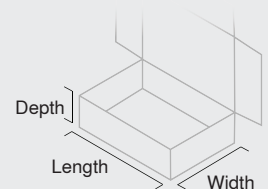
Document PAUS-MKT-00025 Rev 7  
 Date Aug 31, 2023

© Syntegon Group | PAUS | 08.2023 | Subject to change without notice.

## Technical Specifications

Performance	min.	max.
Speed (strokes per minute)	35	60
<small>Actual speed depends upon machine configuration and carton size and style.</small>		
Carton Size Range	min.	max.
Length (standard double head)	127 mm (5.00")	425 mm (16.75")
Width	102 mm (4.00")	247 mm ( 9.75")
Depth	22 mm (0.87")	102 mm ( 4.00")

An individual carton combining multiple minimum or maximum dimensions may not be compatible with the standard system.



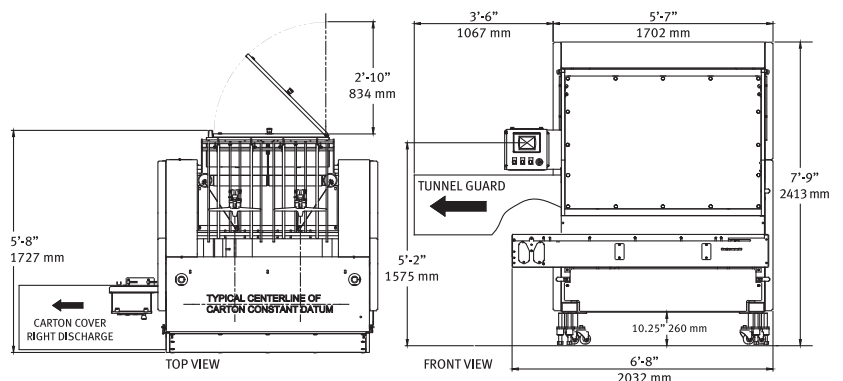
## Operating Requirements

Power Supply	400 VAC / 480 VAC, 50/60 Hz
Air (minimum)	588 L/min (21 cfm / 112.2 scfm) 5.5 bar (80 psi)

## Construction

Stainless steel construction with clear polycarbonate guards. Nickel-plated chains, pulleys and sprockets. Engineering plastics.

Shipping Weight, Estimated	855 kg (1900 lb)
----------------------------	------------------



# Kliklok JR Topload Carton Former.

## VERSATILE DESIGN FOR SMALLER CARTONS

The Kliklok JR lock-style topload carton former is one of the most versatile and dependable formers in the industry. It is designed to form small- to medium-size cartons. Simple but durable construction and easy maintenance ensure smooth and efficient operation. The JR's compact size makes it a perfect fit for installations with limited space.

Forming heads can be changed quickly and easily, making the JR capable of producing a wide variety of carton sizes and styles. The JR can also drive take-away and packing conveyors, and interface with fully automated packaging lines.

### EASY OPERATION WITH PUSHBUTTON CONTROL PANEL

The JR's simple controls are straightforward and require minimal training.

### SINGLE HEAD CONFIGURATIONS

The JR offers a single-head configuration in a compact footprint with a modest carton size range to provide outstanding production efficiency.

### QUICK-CHANGE FORMING HEADS

Kliklok's composite forming heads are lightweight, long-lasting, and provide unusually quiet operation. Size changes can be made in as little as ten to fifteen minutes.

### RELIABLE LOCK FORMING

Lock-style formers erect cartons and trays quickly and efficiently without the extra expense of a glue system. The JR can form cartons with a wide variety of lock configurations.

### LEGENDARY RELIABILITY

The JR's construction and legendary reliability makes it suitable for a broad range of production environments. The JR is rated IP54 for mild washdown.

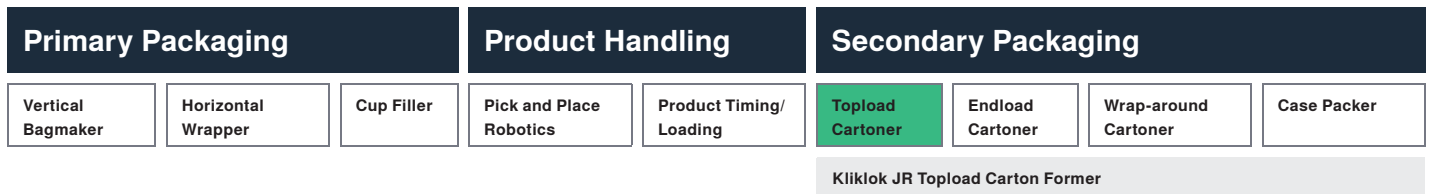
## Your benefits

- ▣ Speeds up to 75 cpm (single head)
- ▣ Easy-to-use pushbutton control panel
- ▣ Compact footprint
- ▣ Durable construction
- ▣ Fast changeovers





# Packaging Line Structure.



## Standard Features

- Single-head configuration
- Lightweight feed bar assembly
- 380 mm ( 15") hopper capacity
- Inclined carton magazine agitators for positive stack advancement and weighted, locking stack pushers
- Rotary vane vacuum pump for carton feeder
- Fully-enclosed barrier guarding with interlocked doors
- Mild steel painted construction \*
- Electrical overload protection for motor and pump
- Leg kit for adjustable height
- Casters for portability and leveling screws
- Multi-color light stack
- Start delay horn

\* Regional variations may apply

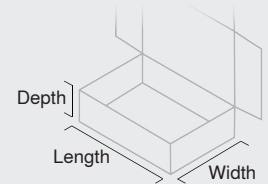
## Optional Features

- Air eject system
- Stainless steel construction

## Technical Specifications

Performance	min.	max.
Speed (strokes per minute)	25	75
<small>Actual speed depends upon machine configuration and carton size and style. Ask Kliklok about meeting higher speed requirements.</small>		
Carton Size Range	min.	max.
Length	100 mm (3.94")	420 mm (16.53")
Width	90 mm (3.54")	180 mm (7.10")
Depth	20 mm (0.75")	70 mm (2.75")

An individual carton combining multiple minimum or maximum dimensions may not be compatible with the standard system.



## Operating Requirements

Power Consumption	400 VAC / 480 VAC, 50/60 Hz
Air	20 liters/min (0.7 cfm) 5.5 bar (80 psi)

## Construction

Fully-welded powder-coated carbon steel frame. Stainless steel shafts. Nickel-plated chains, pulleys and sprockets. Polycarbonate guards.

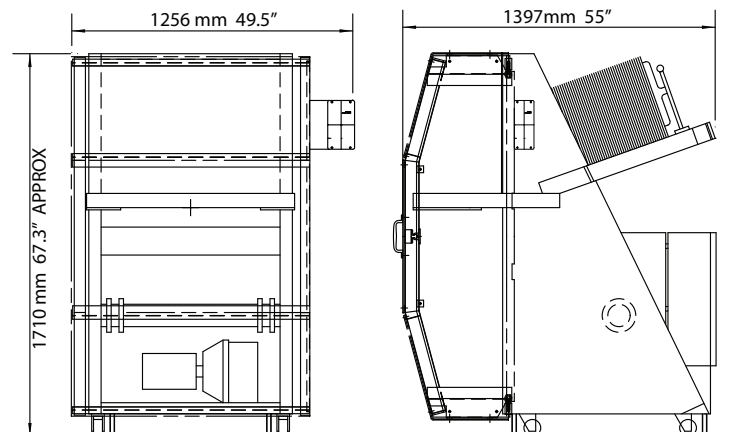
Shipping Weight, Estimated	650 kg (1433 lb)
----------------------------	------------------

Kliklok International Ltd.  
A Syntegon Company  
Western Drive, Hengrove Park Estate  
Bristol, BS14 0AY, UK

Phone +44 1275 836131  
Mail Sales.PAGS@syntegon.com  
Web www.syntegon.com

Document PAUS-MKT-00032 rev 5  
Date March 19, 2024

© Syntegon Group | PAGS | 03.2024 | subject to change without notice.  
Photos may not show standard equipment. Regional differences may apply.



# Kliklok KFW Topload Carton Former

THE WORLD'S MOST WIDELY USED FORMER.

The Kliklok KFW lock-style topload carton former is the most widely-used forming system in the world, with more than 1,000 sold. Because of its simple, rugged design, and welded stainless steel construction, it is one of the most versatile, durable, and highest-performing machines in the industry.

The keys to the KFW's success are its simplistic design, fast change over, and ease of maintenance. With more than 60 years of production experience, the KFW has a legendary reputation for reliability and longevity.

## EASY OPERATION WITH TOUCHSCREEN HMI

The color graphic touchscreen HMI is intuitive and features recipe-based programming that reduces operator error and ensures consistent performance, regardless of shift or operator skill.

## MULTIPLE HEAD CONFIGURATIONS

The KFW combines single-head to quadruple-head configurations with speeds up to 75 strokes per minute to provide the industry's fastest carton output in the most demanding production environments.

## QUICK-CHANGE FORMING HEADS

Kliklok's composite forming heads are lightweight, long-lasting, and provide unusually quiet operation. Size changes can be made in as little as ten to fifteen minutes.

## RELIABLE LOCK FORMING

Lock-style formers erect cartons and trays quickly and efficiently without the extra expense of a glue system. The KFW can form cartons with a wide variety of lock configurations.

## STAINLESS STEEL STANDARD

The KFW's construction and legendary reliability makes it suitable for a broad range of production environments. The KFW is rated IP54 for mild washdown.

## Your benefits

- ❑ Speeds up to 150 cpm (dual heads)
- ❑ Easy-to-use touchscreen HMI
- ❑ World's most widely used former
- ❑ Durable, compact stainless design
- ❑ Fast changeovers



# Packaging Line Structure.

## Primary Packaging

Vertical Bagmaker

Horizontal Wrapper

Cup Filler

## Product Handling

Pick and Place Robotics

Product Timing / Loading

## Secondary Packaging

Topload

Endload

Wraparound

Case Packers

Kliklok KFW Lock-Style Carton Former

## Standard Features

- Multiple-head configuration, single or double
- Allen-Bradley color touchscreen HMI, front-mounted
- Allen-Bradley PLC controls and electricals
- Fully automatic operation plus two-button jog control
- Lightweight feed bar assembly
- 380 mm ( 15") hopper capacity
- Inclined carton magazine agitators for positive stack advancement and weighted, locking stack pushers
- Controlled carton supply system with photoeye
- Rotary vane vacuum pump for carton feeder with overload protection
- Fully-enclosed barrier guarding with interlocked doors
- Startup delay with horn
- Nema 4X stainless steel slope top electrical enclosure with flange-mounted main disconnect
- IP54 dust and water splash protection
- Casters for portability and leveling screws
- Leg kit for adjustable height
- Multi-color light stack
- External ethernet convenience port
- Low carton inventory sensing with alarm

## Optional Features

- Triple- and quad-head configurations
- Machine-driven flighted outfeed conveyor with configurable discharge direction
- Extra-wide-frame model for large cartons (KFXWD)
- Higher speed ratings
- Controlled vacuum system with remote foot switch
- Alternative vacuum sources
- Detent plunger
- Extended hopper capacity
- Air eject system

Kliklok LLC, A Syntegon Technology Company  
5224 Snapfinger Woods Drive  
Decatur, GA 30035 USA

Phone +1 770 981-5200  
Fax +1 770 987-7160  
Mail 2p.3p@syntegon.com  
Web www.syntegon.com/2p

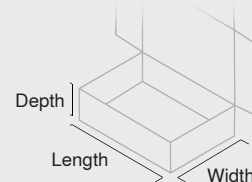
Document PAUS-MKT-00034 Rev 6  
Date Aug 31, 2023

© Syntegon Group | PAUS | 08.2023 | Subject to change without notice.

## Technical Specifications

Performance	min.	max.
Speed (strokes per minute)	35	75
<small>Actual speed depends upon machine configuration and carton size and style.</small>		
Carton Size Range	min.	max.
Length (double head)	127 mm (5.00")	330 mm (13.00")
Length (single head)	127 mm (5.00")	533 mm (21.00")
Width	102 mm (4.00")	203 mm (8.00")
Depth	22 mm (0.87")	102 mm (4.00")

An individual carton combining multiple minimum or maximum dimensions may not be compatible with the standard system.



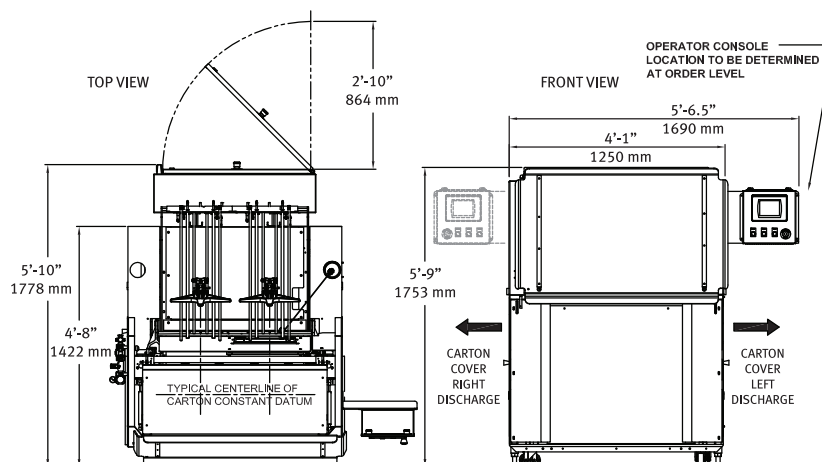
## Operating Requirements

Power Supply	400 VAC / 480 VAC, 50/60 Hz
Air (minimum)	210 L/min (7.5 cfm / 40.07 scfm) 5.5 bar (80 psi)

## Construction

Fully-welded stainless steel frame. Stainless steel shafts. Nickel-plated chains, pulleys and sprockets. Clear polycarbonate guards. Engineering plastics.

Shipping Weight, Skidded 884 kg (1950 lb)



# Kliklok SR4W Topload Carton Former

## LARGE FORMAT CARTON CAPABILITY.

Kliklok's SR4W lock-style carton forming machine is designed to form cartons twice as large as our other machines can at moderate speeds. The SR4W is the ideal carton former for packaging lines where "club store cartons" are part of the production lineup.

Carton changeover can be accomplished in just ten to fifteen minutes with minimal use of tools. Fixed size tooling minimizes the time to stop and restart the line and reduces labor for fast and repeatable size changes. Packaging lines can be switched from club store cartons to smaller retail cartons with minimal downtime, increasing efficiency and making the most of your investment.

### EASY OPERATION WITH TOUCHSCREEN HMI

The color graphic touchscreen HMI is intuitive and features recipe-based programming that reduces operator error and ensures consistent performance, regardless of shift or operator skill.

### MULTIPLE HEAD CONFIGURATIONS

The SR4W combines single-head and double-head configurations with a very wide carton size range to provide outstanding production efficiency. The SR4W can also form turn-over-endwall trays from B-flute blanks.

### QUICK-CHANGE FORMING HEADS

Kliklok's composite forming heads are lightweight, long-lasting, and provide unusually quiet operation. Size changes can be made in as little as ten to fifteen minutes.

### LARGE CARTON SIZE RANGE

The SR4W is designed to handle a wide size range of retail and club store cartons in a variety of carton styles at the fastest speeds in the industry.

### STAINLESS STEEL STANDARD

The SR4W's construction and legendary reliability makes it suitable for a broad range of production environments. The SR4W is rated IP54 for mild washdown.

## Your benefits

- ▣ Speeds up to 120 cpm (dual heads)
- ▣ Easy-to-use touchscreen HMI
- ▣ Large-format carton capability
- ▣ Durable, stainless design
- ▣ Fast changeovers



# Packaging Line Structure.

## Primary Packaging

Vertical Bagmaker

Horizontal Wrapper

Cup Filler

## Product Handling

Pick and Place Robotics

Product Timing / Loading

## Secondary Packaging

Topload

Endload

Wraparound

Case Packers

Kliklok SR4W Lock-Style Carton Former

## Standard Features

- ❑ Multiple-head configuration, single or double
- ❑ Allen-Bradley color touchscreen HMI, front-mounted
- ❑ Allen-Bradley PLC controls and electricals
- ❑ Servo drive motor
- ❑ Fully automatic operation plus jog control
- ❑ Lightweight feed bar assembly
- ❑ 380 mm ( 15") hopper capacity
- ❑ Inclined carton magazine agitators for positive stack advancement and weighted, locking stack pushers
- ❑ Controlled carton supply system with photoeye \*
- ❑ Vacuum pump for carton feeder with overload protection
- ❑ Fully-enclosed barrier guarding with interlocked doors
- ❑ Startup delay with horn
- ❑ Nema 4X stainless steel slope top electrical enclosure with flange-mounted main disconnect \*
- ❑ IP54 dust and water splash protection
- ❑ Casters for portability and leveling screws
- ❑ Leg kit for adjustable height
- ❑ Multi-color light stack
- ❑ External ethernet convenience port
- ❑ Low carton stack alarm

\* Regional differences to specification may apply

## Optional Features

- ❑ Machine-driven flighted outfeed conveyor with configurable discharge direction
- ❑ Higher speed ratings
- ❑ Controlled vacuum system with remote foot switch
- ❑ Alternative vacuum sources
- ❑ Detent plunger
- ❑ Alternative electrical controls
- ❑ Air eject system
- ❑ Turn-over-endwall forming head

Kliklok LLC, A Syntegon Technology Company  
5224 Snapfinger Woods Drive  
Decatur, GA 30035 USA

Phone +1 770 981-5200  
Fax +1 770 987-7160  
Mail 2p.3p@syntegon.com  
Web www.syntegon.com/2p

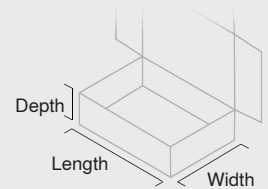
Document PAUS-MKT-00037 Rev 6  
Date Aug 31, 2023

© Syntegon Group | PAUS | 08.2023 | Subject to change without notice.

## Technical Specifications

Performance	min.	max.
Speed (strokes per minute)	25	60
<small>Actual speed depends upon machine configuration and carton size and style.</small>		
Carton Size Range	min.	max.
Length (double head)	127 mm (5.00")	356 mm (14.00")
Length (single head)	127 mm (5.00")	711 mm (28.00")
Width	102 mm (4.00")	304 mm (12.00")
Depth	22 mm (0.87")	140 mm ( 5.50")

An individual carton combining multiple minimum or maximum dimensions may not be compatible with the standard system.



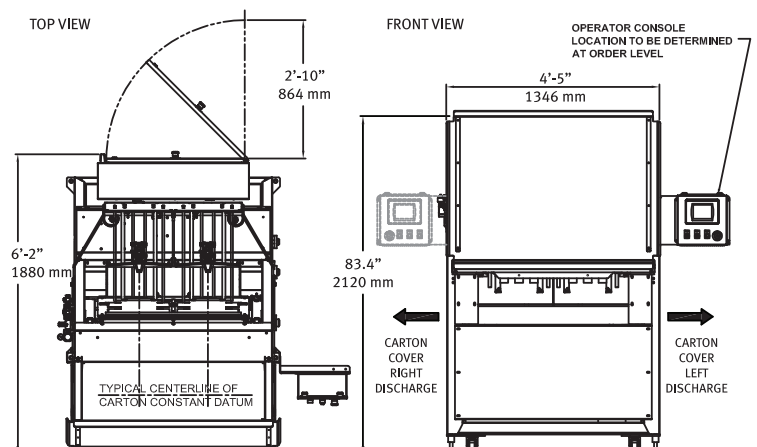
## Operating Requirements

Power Supply	400 VAC / 480 VAC, 50/60 Hz
Air (minimum)	210 L/min (7.5 cfm / 40.07 scfm) 5.5 bar (80 psi)

## Construction

Heavy-duty 6 mm formed stainless steel plate with minimal inside corners. Stainless steel shafts. Nickel-plated chains, pulleys and sprockets. Clear polycarbonate guards. Engineering plastics.

Shipping Weight, Skidded	1207 kg (2662 lb)
--------------------------	-------------------



# Kliklok TransFormer Topload Carton Former

PRODUCES LOCK- AND/OR GLUE-FORMED CARTONS AT 120 CPM.

The Kliklok TransFormer combines the ability to form lock-style and/or glue-style cartons on the same machine at speeds up to 120 cartons per minute with a single head. The Kliklok TransFormer, from the company that invented topload carton forming, has set the new standard for speed and flexibility.

The TransFormer's unique features include an ergonomic waist-level hopper that allows easy carton loading, and a servo driven high-precision linear rail plunger mounting system for absolute head-to-cavity positioning.

## **EASY OPERATION WITH TOUCHSCREEN HMI**

The Insight® color graphic touchscreen HMI is intuitive and features recipe-based programming that reduces operator error and ensures consistent performance, regardless of shift or operator skill. Enhanced diagnostics are standard.

## **LOCK- OR GLUE-FORMING FLEXIBILITY**

The TransFormer offers the greatest production line flexibility by being able to run lock-formed and/or glue-formed carton on one machine, and the glue system does not need to be removed to run lock-formed cartons.

## **FASTEST FORMER AVAILABLE**

The TransFormer's short-stroke, servo-driven forming head can reach speeds of 120 cartons per minute – nearly double the speed of many other formers – and a single head means faster changeovers.

## **HIGH CARTON CAPACITY**

The TransFormer's high capacity carton hopper is set at waist level for easy loading. A belt drive with pneumatic pressure assist ensures consistent carton feeding.

## **FAST CHANGEOVERS**

The TransFormer features a simplified toolless changeover procedure that is guided by the Insight HMI. Minimal change parts and easy-to-read adjustment gauges ensure repeatability with significantly less downtime.

## **Your benefits**

- ▣ Speeds up to 120 cpm (single head)
- ▣ Lock and/or glue forming on one machine
- ▣ Low-level extended capacity carton hopper
- ▣ Easy-to-use Insight® touchscreen HMI
- ▣ Integrated outfeed conveyor
- ▣ Fast changeovers



# Packaging Line Structure.

## Primary Packaging

Vertical Bagmaker

Horizontal Wrapper

Cup Filler

## Product Handling

Pick and Place Robotics

Product Timing / Loading

## Secondary Packaging

Topload

Endload

Wraparound

Case Packers

Kliklok TransFormer Lock- and Glue-Style Carton Former

## Standard Features

- Speeds up to 120 cpm with a single composite head
- Capable of running glue-style and/or stripper lock-style cartons
- Waist level hopper
- 1270 mm ( 50") hopper capacity
- Controlled carton supply with photoeye
- Vacuum generator for carton feeder
- Servo profiled plunger
- Tool-less quick-release plunger mounting
- Integrated outfeed conveyor with VFD drive
- Color touchscreen HMI, front-mounted
- Allen-Bradley electronics
- Jog control pendant
- Carton air eject
- Barrier guarding with interlocking doors
- Nema 4X stainless steel slope top electrical enclosure with flange-mounted main disconnect
- IP54 dust and water splash protection
- Casters for portability and stainless steel leveling screws
- Delayed start alarm
- Multi-color light stack
- External ethernet convenience port
- Low carton inventory sensing with alarm

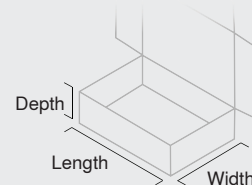
## Optional Features

- Pressurized hot melt glue system
- IP55 construction

## Technical Specifications

Performance	min.	max.
Speed (strokes per minute)	30	120
<small>Actual speed depends upon machine configuration and carton size and style.</small>		
Carton Size Range	min.	max.
Length	127 mm (5.00")	406 mm (16.00")
Width	102 mm (4.00")	205 mm ( 8.00")
Depth	22 mm (0.87")	102 mm (4.00")

An individual carton combining multiple minimum or maximum dimensions may not be compatible with the standard system.



## Operating Requirements

Power Supply	400 VAC / 480 VAC, 50/60 Hz
Air (minimum)	280 L/min (10 cfm / 53.42 scfm) 5.5 bar (80 psi)

## Construction

Fully-welded stainless steel frame. Stainless steel shafts. Nickel-plated chains, pulleys and sprockets. Clear polycarbonate guards. Engineering plastics.

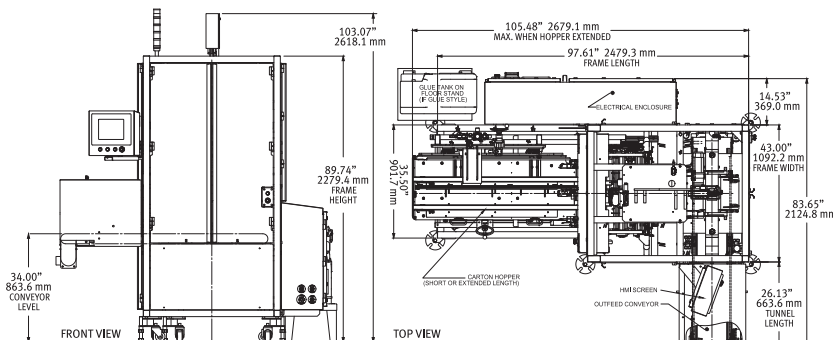
Shipping Weight, Estimated	1370 kg (3014 lb)
----------------------------	-------------------

Kliklok LLC, A Syntegon Technology Company  
5224 Snappinger Woods Drive  
Decatur, GA 30035 USA

Phone +1 770 981-5200  
Fax +1 770 987-7160  
Mail 2p.3p@syntegon.com  
Web www.syntegon.com/2p

Document PAUS-MKT-00040 Rev 6  
Date Aug 31, 2023

© Syntegon Group | PAUS | 08.2023 | Subject to change without notice.



# Contact our team.

**Kliklok LLC, a Syntegon Company**  
5224 Snapfinger Woods Drive  
Decatur, GA 30035 USA

**EMEA**

**Mail [salesfood.emea@syntegon.com](mailto:salesfood.emea@syntegon.com)**

**Phone +41 58 674 7542**

**North America**

**Mail [salesfood.northernamerica@syntegon.com](mailto:salesfood.northernamerica@syntegon.com)**

**Phone +1 715 243 2298**